



IMPORTANT SAFEGUARDS READ AND FOLLOW ALL SAFETY INSTRUCTIONS.

When using electrical equipment, basic safety precautions should always be followed including the following:

- **DISCONNECT AC POWER SUPPLY BEFORE SERVICING.**
- Installation and servicing of this equipment should be performed by qualified service personnel only.
- Ensure that the electrical wiring conforms to the National Electrical Code NEC® and local regulations if applicable.
- Do not mount near gas or electrical heaters.
- Equipment should be mounted in locations and at heights where it will not be readily subjected to tampering by unauthorized personnel.
- The use of accessory equipment not recommended by the manufacturer may cause an unsafe condition.
- Any modification or use of non-original components will void the warranty and product liability.
- Do not use this equipment for other than intended use.
- Read and follow all safety instructions.
- Do not cover this product as the covering may cause the flexible light to overheat and melt or ignite.
- Do not operate with the flexible light tightly coiled. To prevent overheating, do not allow contact between flexible light cables and parts of the light cables. Maintain at least 12 mm spacing between flexible light cables or part of light cables.
- Do not puncture, cut, shorten, or splice the flexible lighting.
- Do not route the cord or flexible lighting through walls, doors, windows or any like part of the building structure.
- Do not use if there is any damage to the light or cord insulation. Inspect periodically.
- Do not submerge flexible light in liquids, or use the product in the vicinity of standing water or other liquids.
- Secure the flexible light using only the hangers or clips provided. Do not secure this product or its cord with staples, nails, or like means that may damage the insulation or permanently attach to the building structure.
- Do not subject flexible lighting to continuous flexing.
- Do not exceed the maximum number of extensions or flexible light lengths permitted by the marking.
- Do not install in cabinets, tanks, or enclosures of any kind.

Instruction Requirements, Continued

WARNING: Risk of fire and electric shock. Uncoil the flexible light prior to electrical connection.

WARNING: When using outdoors, basic safety precautions should always be followed to reduce risk of fire, electric shock, and personal injury, including the following:

- Ground Fault Circuit Interrupter (GFCI) protection should be provided on the circuits or outlet to be used for the flexible lighting product. Receptacles are available having built-in GFCI protection for this measure of safety.
- Use only outdoor extension cords, such as type SW, SOW, STW, STOW, SJW, SJOW, or SJTOW. This designation is marked on the wire of the extension cord.
- **Caution:** Do not install closer than 3 meters from a swimming pool surface.
- Product not suitable for use near swimming pools, spas, tubs, fountains, or any other bodies of liquids.
- Product not suitable for use in a child's room, nursery, or other child's play area.
- The specialtyLED Ribbon Flex is an extremely small profile product made up of Light Emitting Diodes (LED) mounted on a thin flexible copper strip. Due to the construction of the product, special care needs to be taken during the installation process in order to avoid damaging the LEDs or any of the resistors.

SAVE THESE INSTRUCTIONS!

Technical Support ■ (623) 580-8943 ■ technicalsupport@barronltg.com



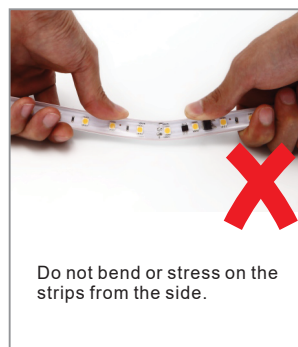
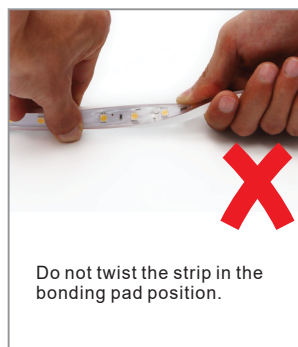
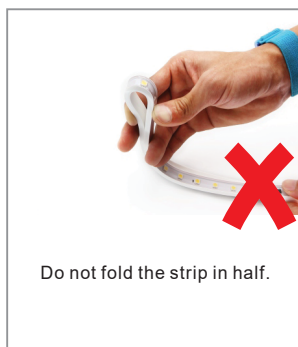
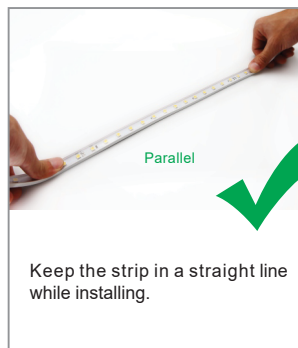
WARNING!

THIS IS NOT A FIELD-CUTTABLE STRIP LIGHT.

DO NOT MODIFY THE STRIP LIGHT OR ATTACHED MOLDED ACCESSORIES.



High Voltage LED Strip Precautions



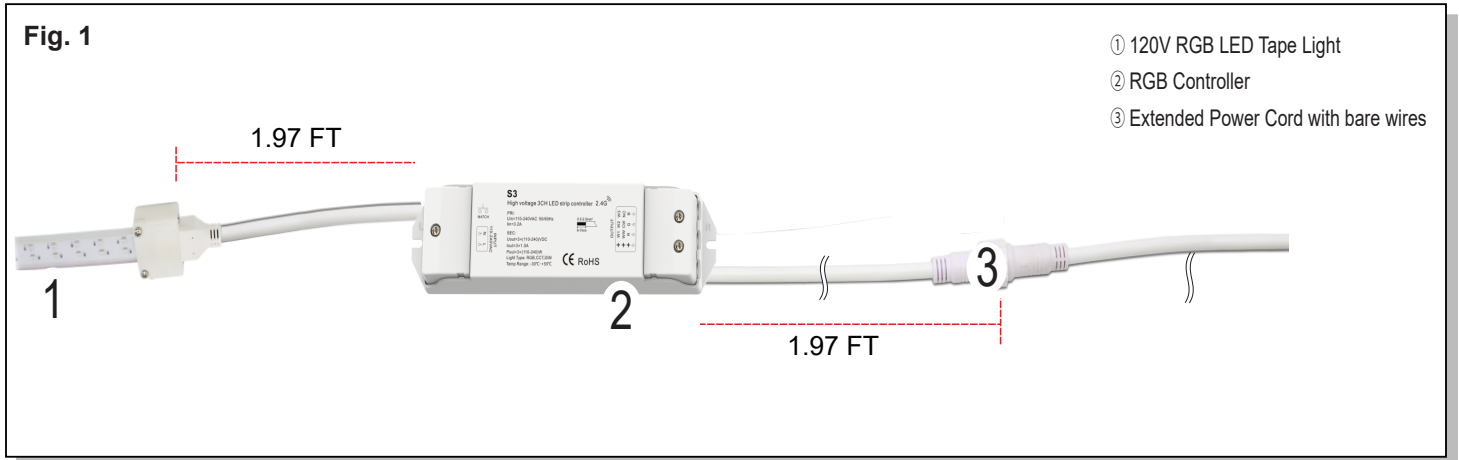
Attention:

Be sure to confirm the install location well before applying power to the strip. Once the strip is illuminated, or its temperature is higher than 40°C, do not pull on it.

RFX120-RGB

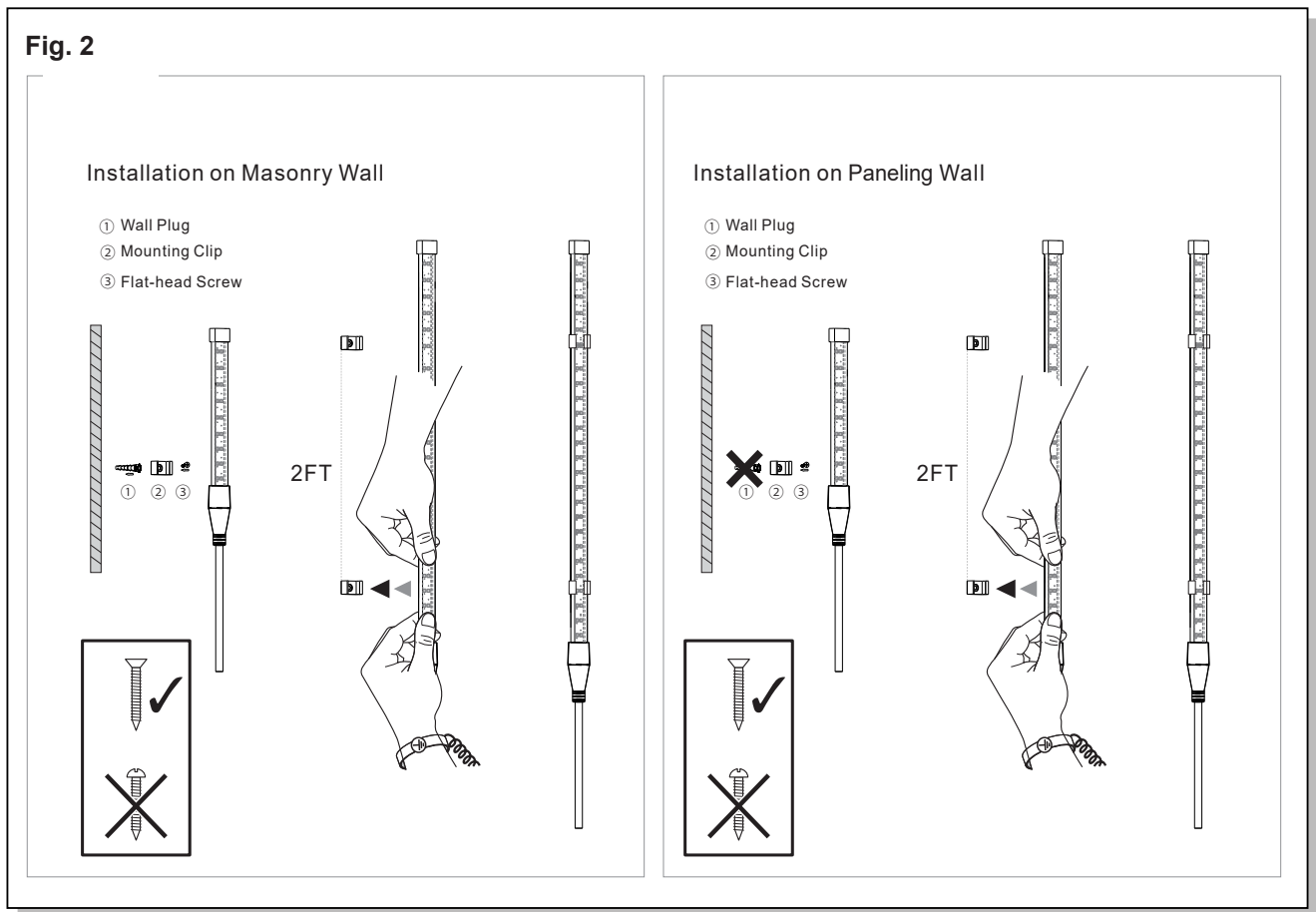
Installation Instructions

Connection Diagrams



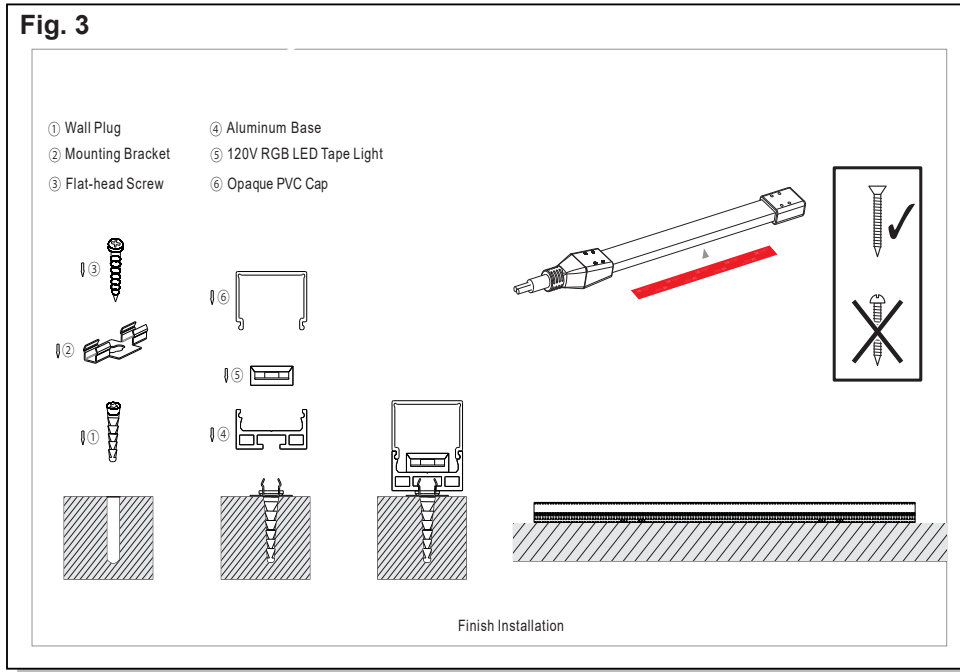
Installation Using Mounting Clips

1. Secure the aluminum base to the mounting surface using appropriate hardware. (Fig. 2)



Installation Using Aluminum Profile

1. Install the LED tape light into the aluminum base. (Fig. 3)



Installation Using PVC Base

1. Snap the opaque PVC cap onto the aluminum base. (Fig. 4)

