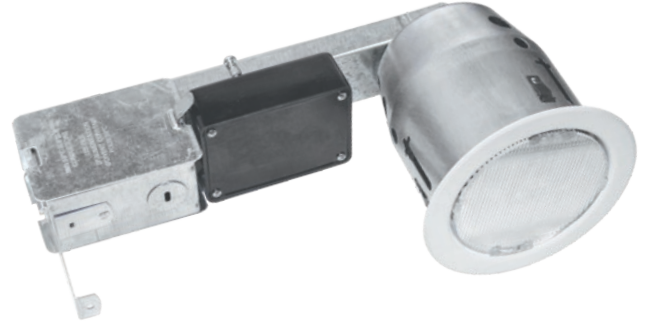


Optimized high-performance LEDs make this architectural downlight an ideal choice for indoor installation in long corridors and open spaces. With 55' spacing in 9' ceilings, this is a prime choice for exceptional light output without affecting the appearance of the ceiling layout in any remodel application.

Model: \_\_\_\_\_ Date: \_\_\_\_\_  
 Accessories: \_\_\_\_\_  
 Job Name: \_\_\_\_\_ Type: \_\_\_\_\_

**FEATURES**

- 55' On-center spacing
- Compact, flush-mount, 4" recessed downlight for remodel applications
- 7 or 10.5 Watt LED options
- Pure white light output at 5600K
- Optical LED lens coupled with a prismatic polycarbonate lens for optimal light output and protection
- Maintenance-free NiMH battery
- Optional PathSafe security/night lighting (SEC) allows the fixture to be used as an emergency lighting and security/night lighting fixture
- Optional Guardian (G2) Self-test/Self-diagnostics available
- Optional Damp Location Rating (DR) available
- Standard finish: White
- External LED status indicator and test button
- 120/277VAC, 50/60Hz input
- Made in the U.S.A.
- ETL Listed for Damp Locations



**WARRANTY**

Any component that fails due to a manufacturing defect is guaranteed for five years with a separate five year pro-rated warranty on the battery. The warranty does not cover physical damage, abuse or instances of uncontrollable natural forces. See the full Exitronix warranty document for detailed information.

**ORDERING INFORMATION Example: NFDL2-WB-10L-WH-DR**

Series	Power Source	LED Wattage	Finish	Options (Factory Installed)
NFDL2	WB = With Battery	7L = (2) 3.5 Watt LEDs 10L = (3) 3.5 Watt LEDs	WH = White	DR = Damp Location Rated G2 <sup>1</sup> = Self-test/Self-diagnostics
<b>Notes</b>				SEC 120 = Security Lighting/Night Light - 120VAC SEC 277 = Security Lighting/Night Light - 277VAC

<sup>1</sup> SEC 120/277VAC is automatically included with this option

## CONSTRUCTION

Remodel Housing: The NFDL2 downlights offer a 4" trim ring with standard galvanized steel can and backplate on a remodel platform designed for remodel and retrofit applications. Heat and impact-resistant polycarbonate prismatic lens resists discoloration. Non-IC Rated.

## ILLUMINATION

Fixtures are supplied with high-powered Luxeon LEDs offering 7 or 10.5 Watts of light output with a pure white color temperature of 5600K. Optical lenses on the LED module combined with the prismatic polycarbonate lens produce an optimized elongated pattern of light throughout the path of egress. The high-performance LEDs have an expected life over 50,000 hours with normal life.

Lamps are connected in parallel – if one lamp fails, the balance of the lamps will continue to operate.

## ELECTRICAL

### Input

120/277VAC, 50/60Hz.

### Nickel Metal Hydride Battery – NiMH (Standard)

Exitronix NiMH batteries are maintenance-free and perform optimally in temperatures ranging from 0°C to 40°C (32°F to 104°F).

### Emergency

The NFDL2 downlight will operate for a minimum of 90 minutes during a loss of power with a 24 hour minimum recharge time for the battery. The power supply delivers a regulated current and voltage to LED lamps to optimize lamp life. A momentary test switch and LED charge indicator are included.

### Brownout Circuit

The brownout circuit monitors the line voltage. As the line voltage sags and can no longer provide adequate voltage, the emergency lighting circuit will turn on to supply power to the emergency lamps for 90 minutes until the line voltage is restored.

### Low Voltage Disconnect

Low Voltage Disconnect (LVD) measures the battery terminal voltage and if it should fall below a preset voltage threshold, the LVD will disconnect the load. When the battery is recharging and voltage is raised above another preset threshold, the load is automatically reconnected.

### Solid-State Transfer

The circuit features Solid-state switching for emergency lamp eliminating concerns of damaged contact or mechanical failures associated with relays. The switching circuit detects a loss of line voltage and automatically switches to emergency mode.

### Overload and Short Circuit Protection

The overload monitoring system in the DC circuit disconnects the lamp load from the battery should excessive wattage demands be made.

## INSTALLATION

This NFDL2 emergency unit is installed as a recessed housing with trim for remodel applications.

## MADE IN THE USA

Made in the U.S.A. and is in full compliance with the American Recovery and Reinvestment Act of 2009 (ARRA) requirements and Buy American provisions.

### DAMP LOCATION RATED (Option: DR)

Damp Location Rated fixture that is normally or periodically subject to condensation of moisture in, on or adjacent to, and includes partially protected locations.

## GUARDIAN SELF-TEST/Self-DIAGNOSTICS (OPTION: G2)

The Guardian circuit continuously monitors the operating condition of the AC power, battery supply voltage, emergency lamp continuity and charging circuit.

The purpose of this option is to provide visual signaling in response to a possible fault. If a failure is detected, visual status will occur immediately via the CHARGER LED and/or the BATTERY FAULT LED. The LEDs will stay illuminated until the fault is corrected.

The Guardian circuit also monitors the transfer circuit and performs automatic code compliant testing. The Guardian circuit will perform a 30 second discharge and self-test every 28-30 days. A 90 minute discharge and self-test is performed every six months.

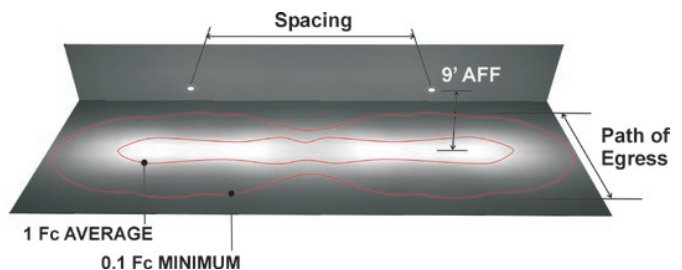
## PATHSAFE SECURITY LIGHTING/NIGHT LIGHT (Option: SEC)

The PathSafe option allows the fixture to be used both as an emergency lighting fixture and security/night lighting fixture. Models with battery back-up and the PathSafe option will operate each LED at 2 Watts (SEC option) offering 50% output when in security lighting mode when connected to the active building AC supply and wired according to the installation instructions. The security lighting circuit is independent of emergency lighting and may be switched manually by exterior photocell (supplied by others) or other automatic means.

## CONFORMANCE TO CODES & STANDARDS

The NFDL2 down light series is ETL Listed and meets or exceeds the following: UL 924, NEC requirements and NFPA 101.

## SPACING GUIDES



LED	Mounting Height	Spacing		
		Path of Egress Width		
		3'	6'	10'
7L	9'	50'	40'	25'
10L	9'	55'	50'	40'

Spacing guidelines are designed to achieve a 1 foot-candle average and a 0.1 foot-candle minimum with a 40:1 or less max/min ratio. Guidelines are intended to be used as a design aid and are not a guarantee of code compliance. Manufacturer assumes no responsibility for local requirements or specific project variables.

## DIMENSIONS

