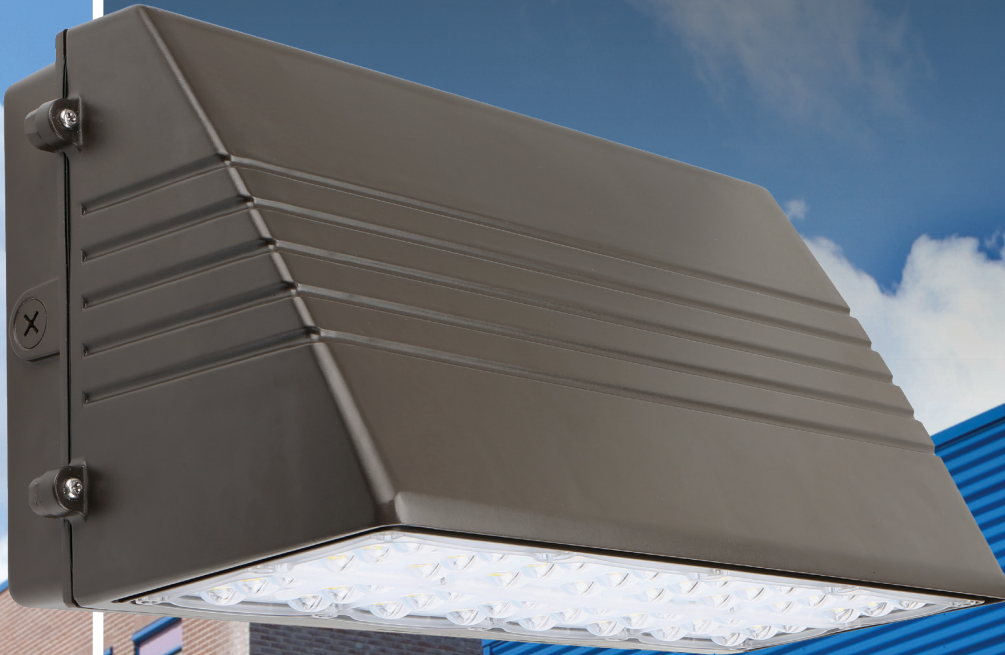




TRACE LITE
commercial & industrial lighting

barronltg.com



ARCHITECTURAL LED WALLPACK

Lumen packages from 3750 to 12,200 lumens.
Efficacies up to 139 LPW maximize energy savings.
Optional battery backup, dimming & photocontrol.

E110X Series

ARCHITECTURAL LED TRAPEZOID WALLPACK

The E110X Series is a traditional full cutoff geometric sconce designed for optimal light control and distribution. Die-cast aluminum construction provides ideal thermal management. Lumen packages from 3750 to 12,200 are available in 3000K, 4000K and 5000K CCT with a Type III distribution. This product offers project flexibility with photocontrol, integral motion sensor and battery backup options. This architectural family is offered in two housing sizes to complement new construction or retrofit applications, for mounting heights up to 30'.



FEATURES & BENEFITS

- Die-cast aluminum housing in a powder coated bronze finish with stainless steel hardware
- UV-stabilized polycarbonate lens
- No uplight design to minimize light pollution
- 27W to 90W LED models replace 100W to 400W HID for up to 70% energy savings
- Efficacies up to 139 LPW maximize utility rebates
- Type III distribution
- Available in 3000K, 4000K and 5000K CCT
- 120-277VAC, 50/60Hz
- 1-10V Dimming driver
- cULus Listed for Wet Locations
- Integral battery backup (BB) operates for 90 minutes, providing over 800 lumens for path of egress; rated for ambient temperatures of 0°C to 40°C (32°F to 104°F)

SPECS AT A GLANCE

Model	E110X-27	E110X-45	E110X-90
Wattage (W)*	27W	45W	90W
Lumens (lm)	3750	6100	12,200
Efficacy (LPW)	139	136	136
Equivalency (HID)	100-150 Watt	175-250 Watt	250-400 Watt
Distribution	Type III		
CCT (K)	3000K, 4000K, 5000K		
CRI	≥70		
Input Voltage	120-277VAC, 50/60Hz		
Operating Temp	-40°C to 45°C (-40°F to 113°F)		
Certifications	cULus Listed for Wet Locations		
Warranty	5 Years		
Weight	6.6 lbs	6.9 lbs	10.7 lbs

*Nominal Wattage. Tested at 5000K CCT. See performance table for more detailed lumen information.

Note: Environment and application will affect actual performance. Typical values and 25°C used for testing.

ORDERING INFORMATION (Example: E110X-45-VS-3K-BR-BB)

Series	Wattage	Input Voltage	CCT	Finish	Options
E110X	27 = 27W	VS = 120-277VAC	3K = 3000K	BR = Bronze	BB = Battery Backup
	45 = 45W		4K = 4000K		SC ¹ = Dimming Sensor
	90 = 90W		5K = 5000K		PC = Button Photocontrol 120/277VAC

LiteLogic Accessories² (Field Installed)

LE-E110X-BL-KIT³ = Bluetooth Enabled Dimming Occupancy Sensor, PIR, Black Finish

LE-E110X-BL-12V-KIT⁴ = Bluetooth Enabled Dimming Occupancy Sensor, PIR, Includes 12V Power Adapter, Black Finish

PCU = 120-277VAC Button Photocontrol

TL-MSSW¹ = Dimming Sensor, White Finish

TL-MSSW-REMOTE = Remote for Sensor

Notes

¹ PC Option not required if ordering SC

³ For 27W models only

² Order as a separate line item. Ships in separate box for final installation in the field

⁴ For 45W and 90W models only



Specifications are subject to change without notice. Installation must be performed in accordance with Barron Lighting Group installation instructions.

10840393 MKT-LIT-E110X Rev 3



7885 North Glen Harbor Blvd
Glendale, Arizona 85307
800.533.3948
barronlitg.com