

# Metal Halide

GLL-600-MH

**ANSI Code: S106**

PERFORMANCE DATA		
Initial PPF (400-700nm)	590	μmol/s
Initial Total Luminous Flux (380-780nm) @ rated watts after 100 hrs operation	40,990	lm
Color Temperature	6,500	K
Color Rendering Index	73	
Operating Position	UNIVERSAL	
Hot Re-strike time	10-15	min
Rated Average Life	12,000	h
Fixture Rating	Open/Enclosed	
Recommended replacement guide for indoor growers	12 mo	Based on 24 hrs per day

PHYSICAL DESCRIPTION		
Maximum Overall Length	292 (11.5)	mm (in)
Light Center Length	175 ± 5 (6.9 ± 0.2)	mm (in)
Bulb Diameter	121 (4.75)	mm (in)
Maximum Base Temperature	210°C (410°F)	°C (°F)
Maximum Bulb Temperature	430°C (800°F)	°C (°F)
BTU's Required for Cooling*	2,250	Per Lamp
Bulb Designation	BT37	
Base Designation	EX39 (MOGUL)	

ELECTRICAL CHARACTERISTICS		
Nominal Lamp Wattage	600	W
Nominal Lamp Voltage	110	V
Nominal Lamp Current	6.2	A
Ballast Requirements ANSI	S106	
Socket Rating	≥ 5	KVA

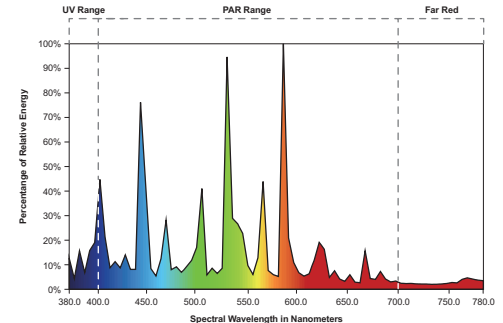
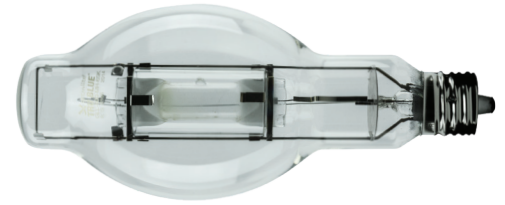
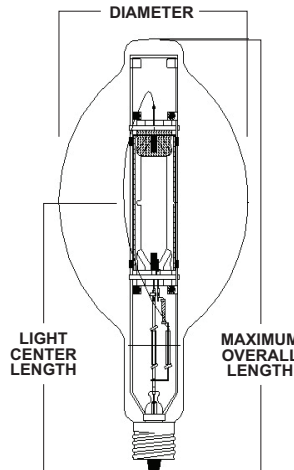
\*Approximate

## WARNING

This lamp can cause serious skin burn and eye inflammation from short-wave ultraviolet radiation if outer envelope of the lamp is broken or punctured. Do not use where people will remain for more than a few minutes unless adequate shielding or other safety precautions are used. Lamps that will automatically extinguish when the outer envelope is broken or punctured are commercially available.

### RISK OF ELECTRIC SHOCK:

- Turn power off before inspection, installation or removal.
- Protect lamp from direct contact with liquids to avoid breakage from thermal shock.



### RISK OF FIRE:

- Keep combustible materials away from lamp during operation.

### UNEXPECTED LAMP RUPTURE MAY CAUSE INJURY, FIRE OR PROPERTY DAMAGE

- Do not exceed rated ballast voltage.
- Do not use lamp if outer glass is scratched or broken.
- Do not use beyond rated life.
- Do not turn on lamp until fully installed.
- Use only with fixture and ballast rated for this product.
- Electrically insulate any metal to glass support in fixture.
- Use in luminaires that do not exceed ANSI maximum lamp voltage rise limit.
- Turn lamp off at least once a week for 15 minutes.

## CAUTION

### RISK OF BURN:

- Allow lamp to cool before handling.

### LAMP MAY SHATTER AND CAUSE INJURY IF BROKEN

- Do not use excessive force when installing lamp.
- Dispose of lamp in an enclosed container.
- Wear safety glasses and gloves when installing lamp.

### LAMP OPERATING INSTRUCTIONS

This is a discharge lamp and requires some time to restart and come up to full brightness after a power interruption. If power supply dips or is interrupted, lamps may extinguish and not restart.

Turn off power supply for 10-15 minutes and allow lamp to fully cool. Lamp will restart when power is restored.

**Note:** All information subject to change without notice.

<b>R</b>	Conforms to:
	USA: 21CFR1040.30 Canada: ANSI 136.1-2000

<b>Hg</b>	Lamp Contains Mercury.
	Manage in Accordance with Disposal Laws.

Visit [www.lamprecycle.org](http://www.lamprecycle.org) or call Growlite to recycle your lamps 888-233-3948